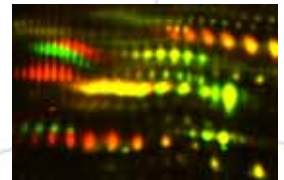
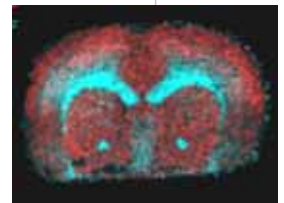




Services offered by the Adelaide Proteomics Centre

- Protein identification by mass spectrometry from gels or solutions
 - Identification of unknown proteins
 - Matching to sequence for confirmation of recombinant protein identity
 - MALDI-TOF/TOF, LC-ESI-IT, and Q-TOF mass spectrometers available
- Whole mass measurements of proteins, oligonucleotides, oligosaccharides and lipids by mass spectrometry (150-150,000 Da)
- Protein separation by gel electrophoresis
 - Standard SDS-PAGE using pre-cast gels stained with Coomassie, MS-compatible silver or fluorescent stains
 - Small, medium and large format two-dimensional electrophoresis using pre-cast gels stained with Coomassie, MS-compatible silver or fluorescent stains
 - Two-dimensional difference gel electrophoresis (2D-DIGE)
 - Expert analysis using the latest software packages
- Protein/peptide separation by chromatography
 - Liquid-chromatography coupled to MALDI-TOF/TOF for comparative, quantitative proteomics or other specialist applications including phosphosite characterisation
 - Magnetic bead fractionation using a variety of surface functionalities including IMAC, TiO₂, hydrophobic interaction, captured antibodies and Concanavalin A for glycoprotein and/or glycan analysis
 - Depletion of highly abundant proteins from human and mouse serum
- Biomarker discovery pipelines
 - Imaging mass spectrometry for visualisation of tissue samples
 - Mass spectrometry profiling of biofluids for characterising disease-associated peptide signatures
- Free-flow electrophoresis for isolating organelles and preparative protein fractionation by isoelectric focusing
- Also available: protein quantitation assays, electrotransfer for Western blotting, *de novo* peptide sequencing and *N*-terminal protein sequencing



What you can expect

- The Adelaide Proteomics Centre offers the latest proteomics technologies to researchers in South Australia, nationally and overseas, from all fields of biological science.
- We understand that your research project is unique. We work with you from concept to completion. Our results provide solutions, not just data.
- The difference starts with design. We work closely with you to design the right experiment using the right combination of equipment.
- To find out how our facility can help you, call us for a confidential consultation.

Director: Dr Peter Hoffmann
Ph: +61 8 8303 5507
Fx: +61 8 8303 4362
Mob: 0434 079 108
Email: Peter.Hoffmann@adelaide.edu.au
Web: www.adelaide.edu.au/mbs/proteomics